

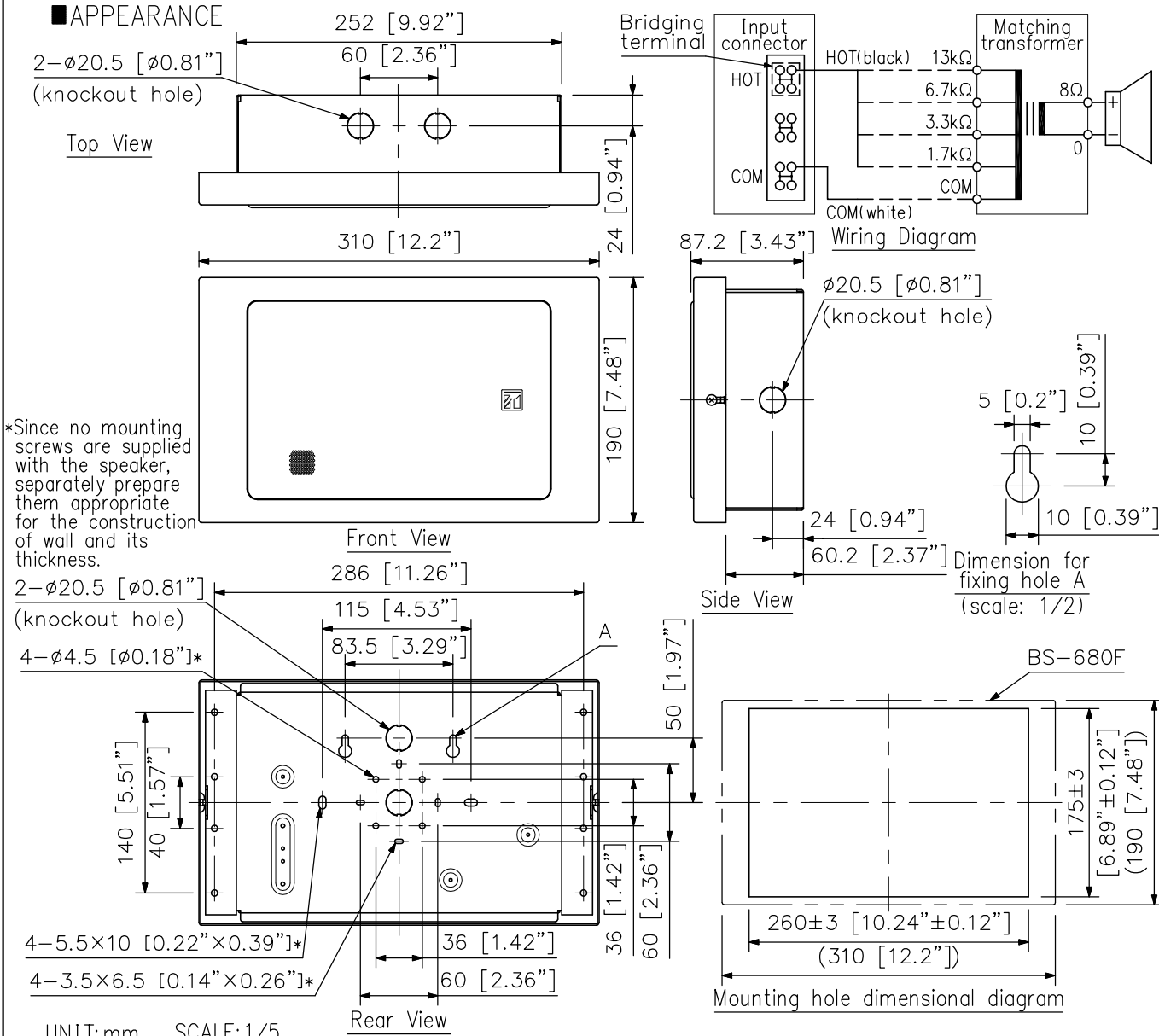
DESCRIPTION

Constructed with metal cabinet, the speaker is ideal for use in a voice alarm system. Can be surface- or flush- mounted to the wall. Either concealed in-wall wiring or exposed wiring can be used for speaker cable connection. The speaker structure of direct wall-mounting with screws prevents the speaker from falling easily even if an outward force is applied to. The input impedance can be easily changed by changing the tap position of the transformer. Two built-in 6-inch double cone speaker units deliver high quality sound. The push-in type input connector makes cable connections easy and allows bridge wiring.

SPECIFICATIONS

| | |
|--------------------|---|
| Rated Input | 6 W (100 V line), 3 W (70 V line) |
| Rated Impedance | 100 V line: 1.7 kΩ (6 W), 3.3 kΩ (3 W), 6.7 kΩ (1.5 W), 13 kΩ (0.8 W) 70 V line: 1.7 kΩ (3 W), 3.3 kΩ (1.5 W), 6.7 kΩ (0.8 W), 13 kΩ (0.4 W) |
| Sensitivity | 94 dB (1 W, 1 m) (500 - 5,000 Hz, pink noise) |
| Frequency Response | 150 - 20,000 Hz (peak -20 dB) |
| Speaker Component | 16 cm (6") double cone-type |
| Applicable Cable | 600 V vinyl-insulated cable (IV wire or HIV wire) Solid wire: $\phi 0.8 - \phi 1.6$ mm (equivalent to AWG 20 - 14) 7-core twisted wire: 0.75 - 1.25 mm ² (equivalent to AWG 18 - 16) |
| Connection | Push-in connector (bridging terminal) |
| Finish | Baffle, Cabinet: Steel plate, off-white (RAL 9010 or equivalent color) Grille: Surface-treated steel plate net, off-white (RAL 9010 or equivalent color) |
| Dimensions | 310 (W) x 190 (H) x 87.2 (D) mm (12.2" x 7.48" x 3.43") |
| Weight | 3 kg (6.61 lb) |
| Accessory | Rubber grommet $\times 2$, Speaker mounting screw (4 x 16) $\times 4$ |

APPEARANCE



*Since no mounting screws are supplied with the speaker, separately prepare them appropriate for the construction of wall and its thickness.

UNIT:mm SCALE:1/5