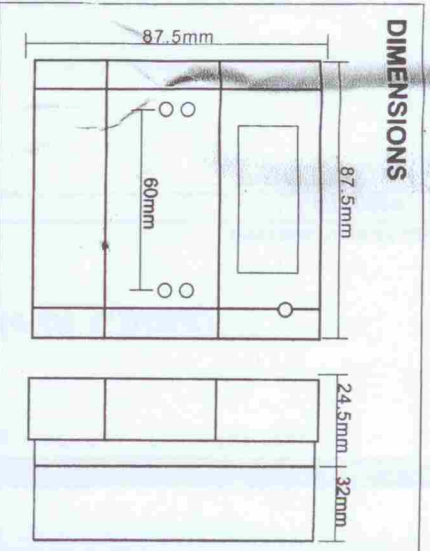


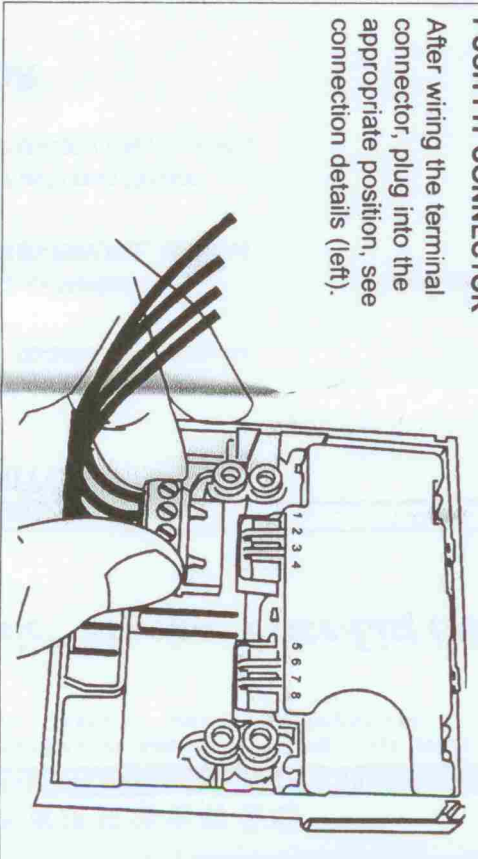
INSTALLATION INSTRUCTIONS FOR THE MANUAL CALL POINT MODELS FA1051AX, FA1052AX, FA1053AX, FA1054AX

CONNECTION DETAILS	FA1051AX	FA1051BX	FA1052AX	FA1052BX
CONNECTION DETAILS	FA1053AX	FA1054AX		

X in the FA105 code (left) represents the final digits of the part number, which indicate FA105 colour, component values, mounting options and element type.
 eg FA105 A, R470SF
 II
 (FA105A, Red, 470R, Surface, Flexible Element).



PUSH FIT CONNECTOR
 After wiring the terminal connector, plug into the appropriate position, see connection details (left).

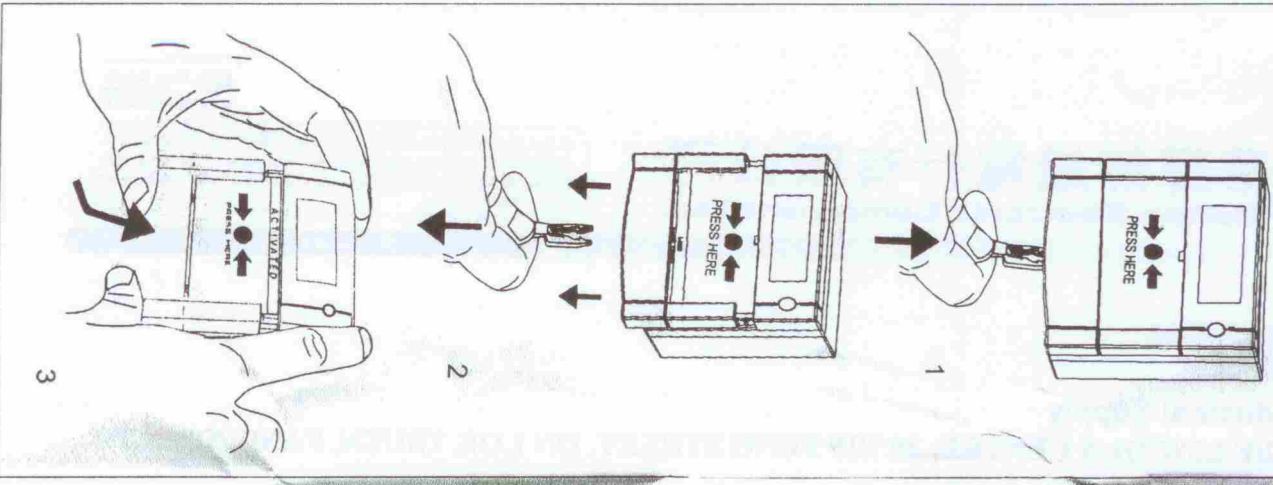


TECHNICAL DATA

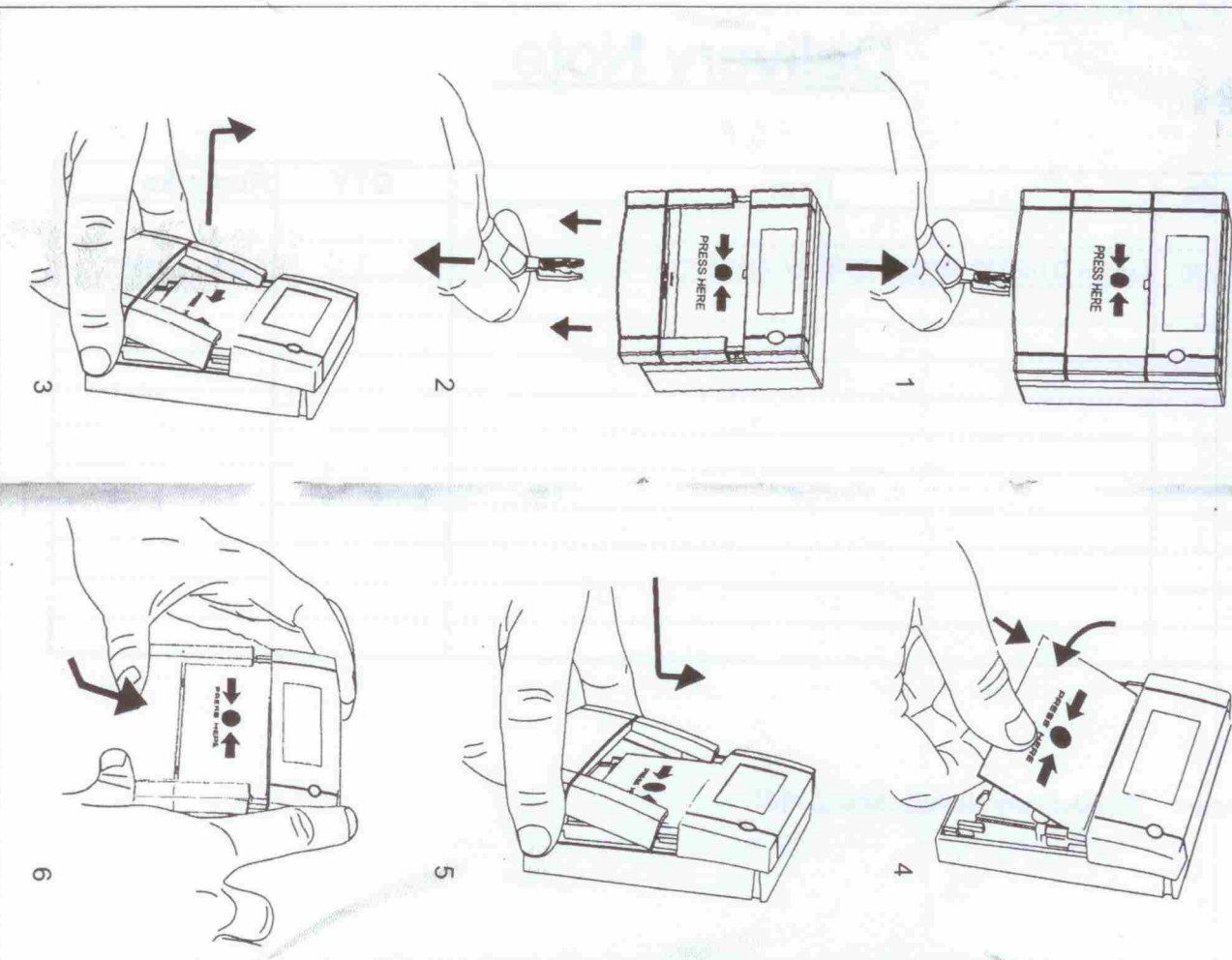
	30VDC Max		-30°C to 70°C
	2A Max		Red, Ral 3001
	IP24D		Yellow, Ral 1006
	110/160g		Green, Ral 6016
			White, Ral 9010
			Blue, Ral 5002

STALLATION INSTRUCTIONS FOR THE MANUAL CALL POINT MODELS FA1051AX FA1052AX FA1053AX FA1054AX

TO TEST



TO REPLACE GLASS / RESETTABLE ELEMENT



TO RESET

