

Products > SPORTING > Outdoor > SENS series

SENS Mini



Features

- CREE XP-G (R5) LED
- Maximum output of up to 170 lumens
- Highly effective current circuit board
- High efficiency circuit enables maximum runtime of up to 14 hours
- 3 brightness levels
- Active dimming system with auto-adjust function
- Soft turn-on mode and low illumination for everyday usage
- Convenient one-handed operation
- Board voltage circuit, compatible with primary or rechargeable Li-ion batteries
- Reverse polarity protection
- Equipped with integrated lens
- Constructed from aerospace grade aluminum alloy
- Type III military grade hard anodizing
- Special-made rhombic knurling for better grip
- Waterproof in accordance with IPX-8 (2 meters submersible)
- Tail stand ability

Dimensions

Length: 57mm
 Head Diameter: 19.8mm
 Tail Diameter: 18.5mm
 Weight: 19.4g (without battery)

Accessories

Key chain, spare O-ring

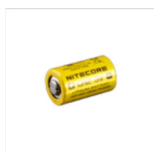
Reviews

1. [Welcome to the new "mystery magic lights" from Nitecore, the SENS series.](#) --Eric-Selfbuild
2. [Technology as a whole is moving forward, and Nitecore moving lighting technology forward with it.](#) --Josh-Biqmac 97
3. ["Gimme" or a "Gimmicky" :NITECORE new line of EDC lights featuring Active Dimming Technology \(ADT\).](#) --Tim-TurboBB
4. [NiteCore incorporates an accelerometer into its electronics to control and change output levels.](#) --Meveel
5. [Auto levels mode is really "idiot proof" and really effective.](#) --TallNHairyDave
6. [Here we stand, poised on the precipice of a new era in flashlights.](#) --David
7. [The more I use them, the more I really love these EDCs.](#) --Run4ic
8. [Check here for more amazing photoes of SENS.](#) --Balazs
9. [Dass das revolutionäre Konzept von Nitecore hier wirklich sinnvoll ist.](#) --Marcel
9. [NITECORE SENS!](#) --Pablitto
10. [NITECORE Sens series reviews--dong](#)

SeriesProducts



Optional accessory



Related information

[Design and Features](#)

NITECORE®**SENS Mini**ADT® (Active Dimming Technology) built-in. **5-8 times extended runtime****170lumens**

- **Innovative Active Dimming design offers automatic power saving**
- **In addition to 3 levels of brightness for mode switching on the fly**

NITECORE®**SENS Mini**ADT® (Active Dimming Technology) built-in. **5-8 times extended runtime****170lumens**

About ADT(Active Dimming Technology):

Nitecore SENS series flashlights feature an integrated acceleration sensor and micro processor which work together to calculate the distance of targets based on geometric theory. The sensor continuously detects the angle of the flashlight in relation to the floor, while the micro processor uses this data to vary the light output.

Real-world example: Turning a SENS series flashlight on with the head pointed straight up activates active dimming mode. When held in a horizontal position, output will seamlessly and automatically increase for illuminating targets at a distance. Alternatively, when held vertically output will seamlessly and automatically reduce for closer range targets. When used in ADT mode, SENS series flashlights enjoy significantly longer runtimes than competing products.



Active Dimming mode is accessed by turning the light on with head pointing upward

NITECORE®

SENS **Mini**

ADT® (Active Dimming Technology) built-in. **5-8 times extended runtime**

170lumens

A twist-activated switch offers the convenience of one-handed operation



NITECORE®

SENS **Mini**

ADT® (Active Dimming Technology) built-in. **5-8 times extended runtime**

170lumens

Direct access to four modes

The flashlight will detect the angle with the floor and select the appropriate brightness mode.



Direct access to ADT (Active-dimming) mode.



Direct access to high fixed output mode.



Direct access to medium fixed output mode.



Direct access to low fixed output mode.

NITECORE®

SENS Mini

ADT® (Active Dimming Technology) built-in. **5-8 times extended runtime**

170lumens



Compact size and intelligent design

NITECORE®

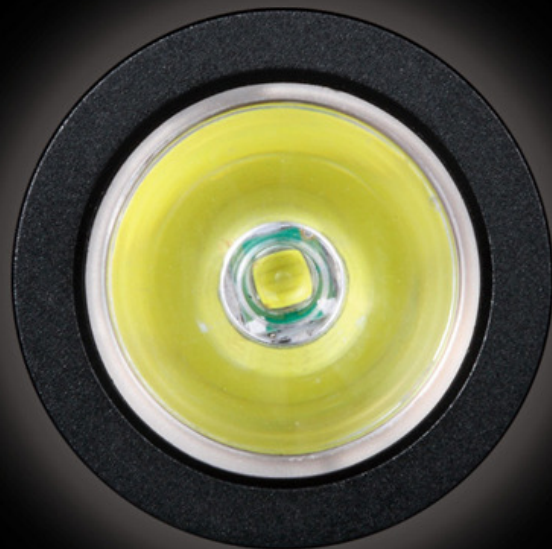
SENS Mini

ADT® (Active Dimming Technology) built-in. **5-8 times extended runtime**

170lumens

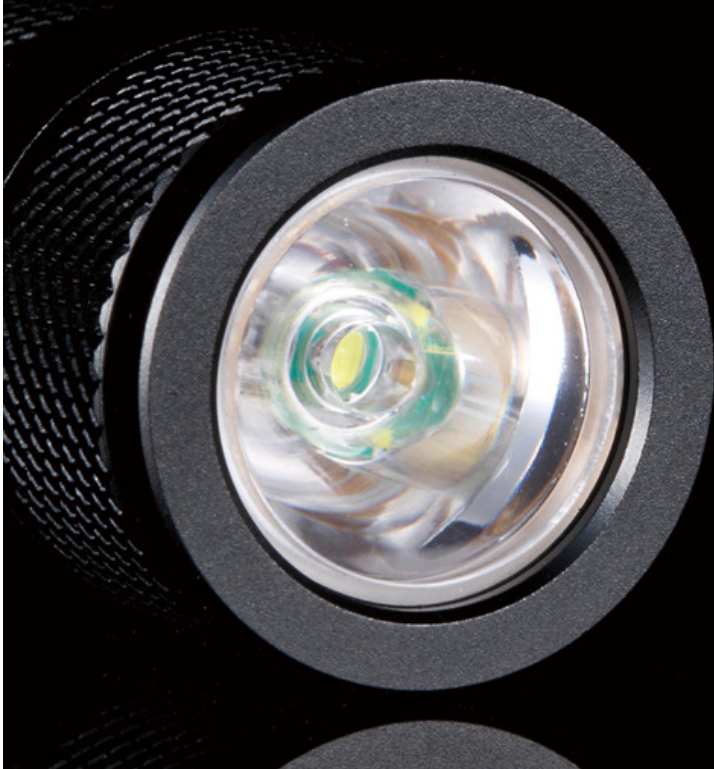
**Slim, sleek and compact:
Nitecore SENS flashlights are
ideal for every-day carry**



NITECORE®**SENS Mini**ADT® (Active Dimming Technology) built-in. **5-8 times extended runtime****170lumens****Your ultimate pocket/keychain light****NITECORE®****SENS Mini**ADT® (Active Dimming Technology) built-in. **5-8 times extended runtime****170lumens****CREE XP-G (R5) LED**LED burn time of up to
50,000hours

NITECORE®

ADT® (Active Dimming Technology) built-in. 5-8 times extended runtime

*SENS Mini***170lumens**

**A TIR optical lens
produces a large and
consistent flood light.**

NITECORE®

ADT® (Active Dimming Technology) built-in. 5-8 times extended runtime

*SENS Mini***170lumens**

**Features reverse polarity
protection**

NITECORE®

SENS **Mini**

ADT® (Active Dimming Technology) built-in. **5-8 times extended runtime**

170lumens



Waterproof in accordance with IPX-8
(2 meters submersible)

NITECORE®

SENS **Mini**

ADT® (Active Dimming Technology) built-in. **5-8 times extended runtime**

170lumens

Power by CR2 battery

Extremely compact, highly portable



NITECORE®

ADT® (Active Dimming Technology) built-in. 5-8 times extended runtime

SENS **Mini****170lumens****Various models available****SENS AA:** Powered by 1xAA battery

Affordable accessible power

**SENS CR:** Powered by 1xCR123 battery

Serious pocket power

**SENS Mini:** Powered by 1xCR2 battery

Extremely compact for everyday use

NITECORE®

ADT® (Active Dimming Technology) built-in. 5-8 times extended runtime

SENS **Mini****170lumens****Features**

- CREE XP-G (R5) LED
- Maximum output of up to 170 lumens
- Highly effective current circuit board
- High efficient circuit enables maximum runtime of up to 14 hours
- Three preset brightness levels
- Active dimming system with auto-adjust function
- Soft turn-on mode and low illumination for everyday usage
- Convenient one-handed operation
- Broad voltage circuit, compatible with primary or rechargeable Li-ion batteries
- Reverse polarity protection
- Equipped with integrated optical lens
- Constructed from aerospace grade aluminum alloy
- Type III military grade hard anodizing
- Purpose-designed rhombic knurling for better grip
- Waterproof in accordance with IPX-8 (2 meters submersible)
- Able to tailstand for use as a candle.

NITECORE®**SENS Mini**

ADT® (Active Dimming Technology) built-in. 5-8 times extended runtime

170lumens

Dimensions

Length: 57mm

Head Diameter: 19.8mm

Tail Diameter: 18.5mm

Weight: 19.4g (without battery)

Accessories

Key chain, spare O-ring

FL1 STANDARD	HIGH	MID	LOW
	170 LUMENS	50 LUMENS	20 LUMENS
	1h	4h	14h
	69m (Beam Distance)		
	1200cd (Peak Beam Intensity)		
	1.5m (Impact Resistant)		
	IPX-8, 2m (Waterproof AND Submersible)		

NOTICE

The stated data has been measured in accordance with the international flashlight testing standards ANSI/NEMA FL1, using one high quality CR2 battery (3V, 850mAh) under laboratory conditions. The data may vary in real-world use due to different battery usage or environmental conditions.

copyright ©2012 NITECORE All rights reserved.