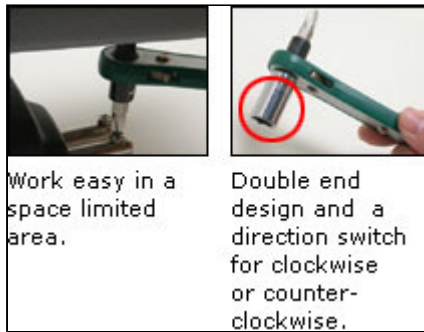


This offset ratchet screw and socket driver set comprised six hexagon sockets manufactured from good quality carbon steel, correctly hardened, tempered and chrome plated. The screwdriver has a 1/4" hexagon drive to accommodate the ten 1/4" hexagon bits which are manufactured from Cr-V steel. Correctly hardened and tempered with a shot blasted finish. Also featured on the driver is a 1/4" sq. Drive male head for driving 1/4" square drive sockets.



Work easy in a space limited area.

Double end design and a direction switch for clockwise or counter-clockwise.

Socket	Contents	Spec	Weight (g)	Individual Packing
● 5, 6, 7, 8, 9, 10 (Metric Size)	<ul style="list-style-type: none"> ■ 4, 5, 6, mm ⊕ No1, No2 ⊕ No1, No2 ⊕ T10, T15, T20 		245	Blister Card