

# 717/718/718Ex/719 Pressure Calibrators

FLUKE®

**New**



Fluke 719



Fluke 717



Fluke 718Ex



Fluke 718



## Included Accessories

Fluke 717, 718, 718Ex and 719:

Yellow Holster (718Ex red holster), TL75 Test leads, AC72 Alligator Clips, Single 9V alkaline battery (two 9V batteries in 718 and 719), User manual on CD ROM.

719 also includes: Push fit connectors, Translucent test hose.

## Ordering Information

Fluke 719 30G	Electric Pressure Calibrator
Fluke 719 100G	Electric Pressure Calibrator
Fluke 718 1G	Pressure Calibrator
Fluke 718 30G	Pressure Calibrator
Fluke 718 100G	Pressure Calibrator
Fluke 718 300G	Pressure Calibrator
Fluke 717 1G	Pressure Calibrator
Fluke 717 30G	Pressure Calibrator
Fluke 717 100G	Pressure Calibrator
Fluke 717 300G	Pressure Calibrator
Fluke 717 500G	Pressure Calibrator
Fluke 717 1000G	Pressure Calibrator
Fluke 717 1500G	Pressure Calibrator
Fluke 717 3000G	Pressure Calibrator
Fluke 717 5000G	Pressure Calibrator

10033-eng Rev. 10

## Pump up the pressure

### 717 Pressure Calibrators

- Measure pressure, 0.05% of full scale with internal sensor
  - 1/8 NPT pressure fitting
  - Compatible with non-corrosive gasses and liquids
- Pressure measurement to 700 bar using any of the Fluke-700Pxx Pressure Modules
- Wide range of selectable measurement units for pressure
- Current measurement with 0.015% accuracy and 0.001mA resolution
- Simultaneous pressure and current measurement for easy P/I testing
- 24 volt loop power supply
- Zero, Min-Max, Hold and Damping functions
- Pressure switch test captures set, reset and deadband values

### 718 Pressure Calibrators

- Same features as Fluke 717 plus
- Newly designed built-in pressure/vacuum hand pump with vernier and bleed valve helps protect the pump from damage and is easier to clean

For 718Ex Intrinsically Safe Pressure Calibrator see chapter on Ex products in this catalog.

### 719 Electric Pressure Calibrator

- Same features as Fluke 717 plus:
- **Electric pump** for one handed operation
- mA source for calibrating I/P devices and 4-20 mA I/O
- Best in class pressure measurement accuracy of 0.025%

## Specifications

Model	Range	Resolution	Over Pressure
719 30G	-850 mbar to 2.4 bar	0.1 mbar	Over Pressure 2xFS
719 100G	-850 mbar to 8 bar	1 mbar	Over Pressure 2xFS
718 1G	-68.9 mbar to 68.9 mbar	0.001 mbar	Over Pressure 5xFS
718 30G	-850 mbar to 2 bar	0.1 mbar	Over Pressure 2xFS
718 100G	-850 mbar to 7 bar	0.1 mbar	Over Pressure 2xFS
718 300G	-850 mbar to 20 bar	1 mbar	Over Pressure 375 PSI, 25 bar
717 1G	-68.9 mbar to 68.9 mbar	0.001 mbar	Over Pressure 5xFS
717 30G	-850 mbar to 2 bar	0.1 mbar	Over Pressure 2xFS
717 100G	-850 mbar to 7 bar	0.1 mbar	Over Pressure 2xFS
717 300G	-850 mbar to 20 bar	1 mbar	Over Pressure 375 PSI, 25 bar
717 500G	0 mbar to 34.5 bar	1 mbar	Over Pressure 2xFS
717 1000G	0 mbar to 69 bar	1 mbar	Over Pressure 2xFS
717 1500G	0 bar to 103.4 bar	0.01 bar	Over Pressure 2xFS
717 3000G	0 bar to 207 bar	0.01 bar	Over Pressure 2xFS
717 5000G	0 bar to 345 bar	0.01 bar	Over Pressure 2xFS

For Fluke 717/718/719 models: Supported Pressure Units; psi, in. H<sub>2</sub>O(4°C), in. H<sub>2</sub>O(20°C), cm H<sub>2</sub>O(4°C), cm H<sub>2</sub>O(20°C), bar mBar, kPa, inHg, mmHg, kg/cm<sup>2</sup>

Functions: Zero, Min, Max, Hold, Damp functions

Max. Voltage: 30 V

Operating temperature: -10°C to 55°C

Safety: CSA C22.2 No. 1010.1:1992

EMC: EN50082-1:1992 and EN55022:1994 Class B

Fluke 717: For use with non corrosive gasses and liquids

Fluke 718/719: For use with non corrosive gasses

### 717

Size (HxWxD): 201 mm x 98 mm x 52 mm

Weight: 0.6 kg

Warranty: Three years

### 718/718Ex

Size (HxWxD): 216 mm x 94 mm x 66 mm

Weight: 0.992 kg

Warranty 718: Three years

Warranty 718Ex: One year

### 719

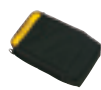
Size (HxWxD): 210 mm x 87 mm x 60 mm

Weight: 0.912 kg

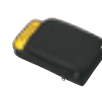
Warranty: Three years (Pump one year)

## Recommended Accessories

(Not for hazardous zones)



C43 (718)  
See page 106



C125 (717)  
See page 106



TL220  
See page 100



700P27  
See page 94



700LTP-1  
See page 94