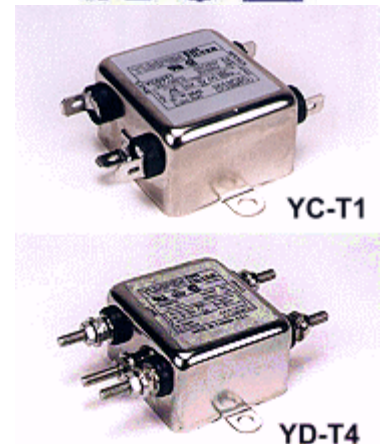


# YUNPEN USA

## YC-T1, YD-T4 SERIES

### 1. FEATURES

- Superior performance controlling EMI Suppression of both line-to-line and line-to-ground noise
- Low cost
- Compact design
- 250 Fasten terminals (YC-T1)
- Screw input/output terminals M-4. (YD-T4)
- All parts of YC-T1 are approved by **UL** and **CSA**
- All parts of YD-T4 are approved by **UL**, **CSA** and **VDE**



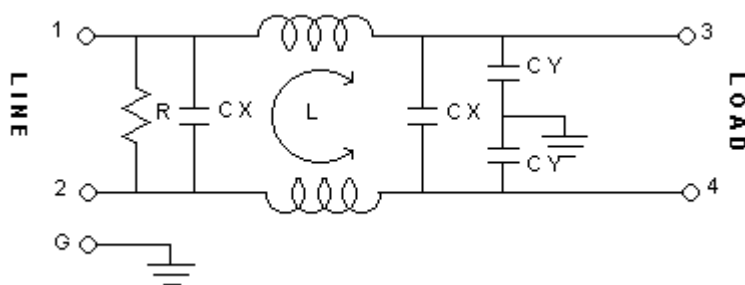
### 2. SPECIFICATIONS

ITEM \ MODEL		YC05T1/YD05T4	YC10T1/YD10T4	YC15T1/YD15T4	YC20T1/YD20T4
RATED VOLTAGE		250V AC	250V AC	250V AC	250V AC
RATED CURRENT		5A	10A	15A	20A
LEAK CURRENT		0.8mA MAX 250V,50HZ	0.8mA MAX 250V,50HZ	0.8mA MAX 250V,50HZ	0.8mA MAX 250V,50HZ
TEST VOLTAGE	LINE TO LINE	1450V DC	1450V DC	1450V DC	1450V DC
	LINE TO GROUND	2250V DC	2250V DC	2250V DC	2250V DC
INSULATION RESISTANCE		100M ohm MIN 250VDC	100M ohm MIN 250VDC	100M ohm MIN 250VDC	100M ohm MIN 250VDC
DIRECT CURRENT RESISTANCE		0.3 ohm MAX	0.15 ohm MAX	0.1 ohm MAX	0.05 ohm MAX
TEMPERATURE RISE		30C MAX	30C MAX	30C MAX	30C MAX
OPERATING TEMPERATURE		-25 ~ +85C	-25 ~ +85C	-25 ~ +85C	-25 ~ +85C
ATTENUATION	NORMAL MODE 25dbMIN	0.27 ~ 45MHZ	0.36 ~ 50MHZ	0.50 ~ 50MHZ	1.60 ~ 50MHZ
	COMMON MODE 25dbMIN	0.30 ~ 40MHZ	0.67 ~ 50MHZ	1.80 ~ 50MHZ	1.80 ~ 50MHZ
CX		0.1uF*2	0.1uF*2	0.1uF*2	0.1uF*2
CY		3300pF*2	3300pF*2	3300pF*2	3300pF*2
INDUCTANCE		1.7mH*2	1.2mH*2	0.9mH*2	0.5mH*2

### 3. NOISE ATTENUATION (dB)

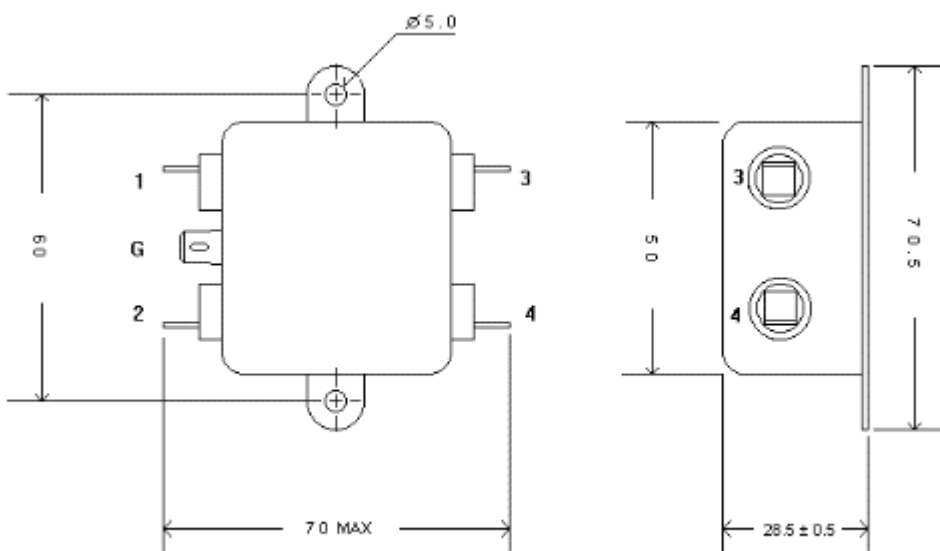
COMMON MODE (LINE TO GROUND) IN 50 OHM SYSTEM							
TYPE	CURRENT RATING	FREQUENCY-MHZ					
		0.15	0.5	1.0	5.0	10.0	30.0
YC05T1/YD05T4	5A	17	27	31	42	46	42
YC10T1/YD10T4	10A	16	24	28	34	36	40
YC15T1/YD15T4	15A	14	19	22	32	33	41
YC20T1/YD20T4	20A	7	17	22	32	34	50
DIFFERENTIAL MODE (LINE TO LINE) IN 50 OHM SYSTEM							
YC05T1/YD05T4	5A	7	37	37	46	42	37
YC10T1/YD10T4	10A	9	36	35	40	42	38
YC15T1/YD15T4	15A	10	32	28	37	38	40
YC20T1/YD20T4	20A	7	27	28	36	39	46

### 4. CIRCUIT



### 5. DIMENSION(mm)

#### YC05T1~YC20T1



#### YD05T4~YD20T4

