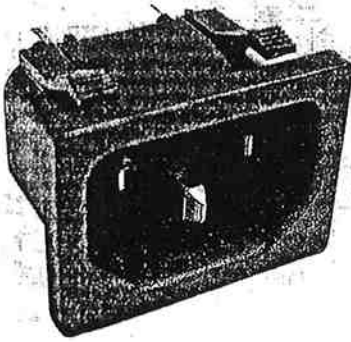


230/W(BOP)

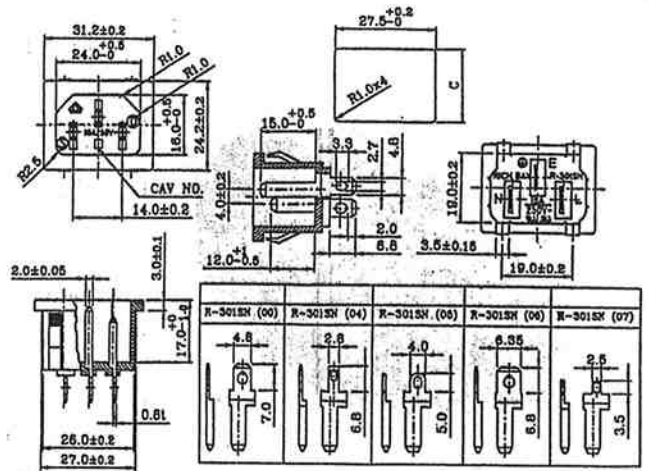
INLET SOCKET

R-301SN

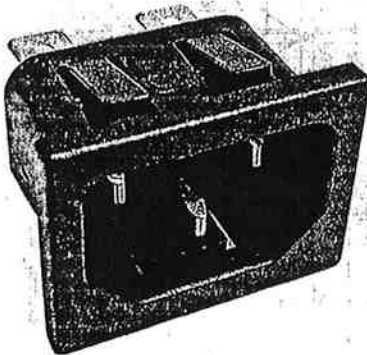


SPECIFICATION :

- * Rating: 10-15A 250V AC.
- * Insulation Resistance: 100MΩ at 500V DC.
- * Dielectric Strength: 2000V AC 1 minute.
- * Body material: Nylon 66 UL 94V-0.
- * Approvals:

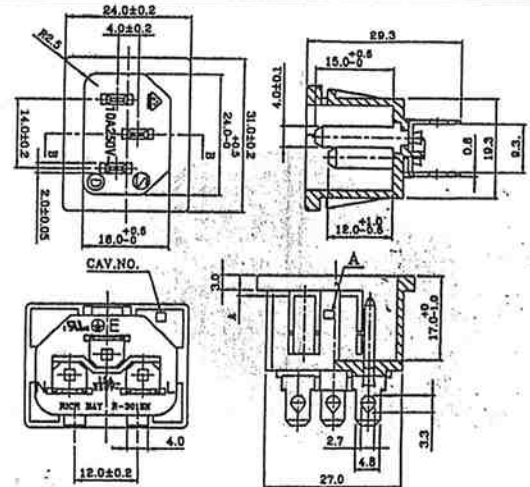


R-301SN(01)

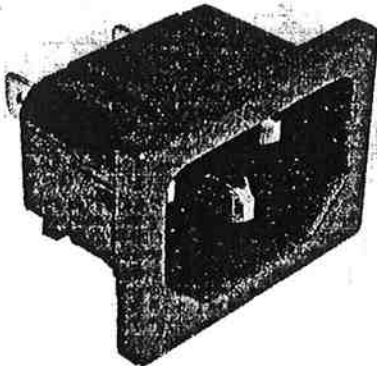


SPECIFICATION :

- * Rating: 10-15A 250V AC.
- * Insulation Resistance: 100MΩ at 500V DC.
- * Dielectric Strength: 2000V AC 1 minute.
- * Body material: Nylon 66 UL 94V-0.
- * Approvals:

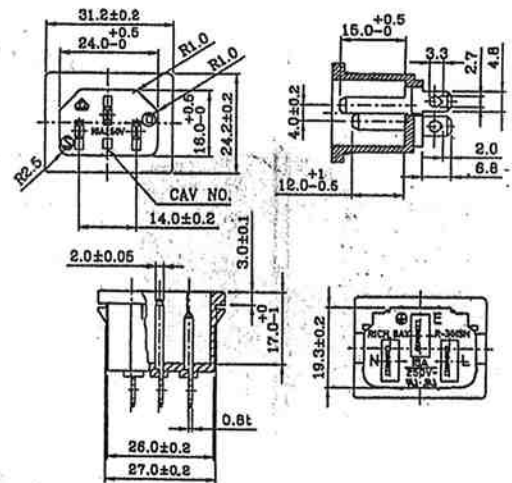


R-301SN(37)

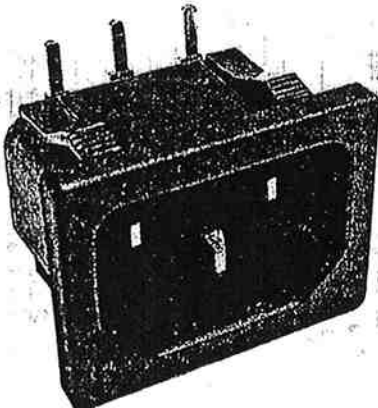


SPECIFICATION :

- * Rating: 10-15A 250V AC.
- * Insulation Resistance: 100MΩ at 500V DC.
- * Dielectric Strength: 2000V AC 1 minute.
- * Body material: Nylon 66 UL 94V-0.
- * Approvals:



R-301SN(12)



SPECIFICATION :

- * Rating: 10-15A 250V AC.
- * Insulation Resistance: 100MΩ at 500V DC.
- * Dielectric Strength: 2000V AC 1 minute.
- * Body material: Nylon 66 UL 94V-0.
- * Approvals:

