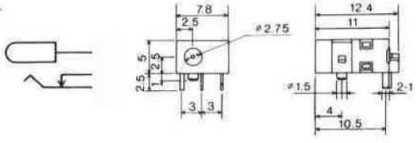
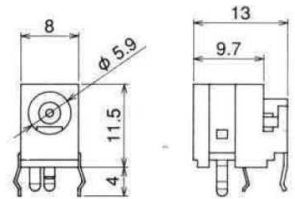
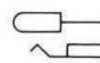


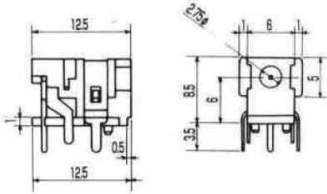
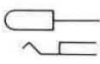
No.M04-446E0
DC JACK FOR P.C.B.
(center pin : 0.65 φ mm)
JSAJ 1 (DC 3.15V Max)



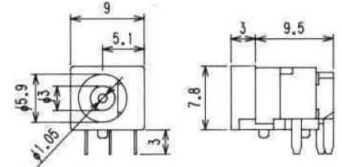
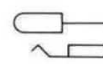
No.M04-700A0
DC JACK FOR P.C.B.
(center hole : 1.05 φ mm)
JSBJ 4 (DC 10.5V~13.5V)



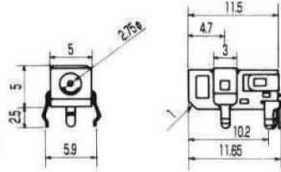
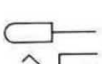
No.M04-477A0
DC JACK FOR P.C.B. (center pin : 0.65 φ mm)
JSAJ 1 (DC 3.15V Max)



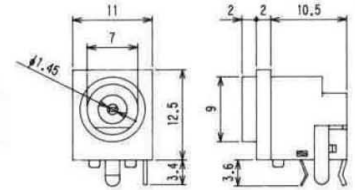
No.M04-390DJ
DC JACK FOR P.C.B.
(center hole : 1.05 φ mm)
JSBJ 4 (DC 10.5V~13.5V)



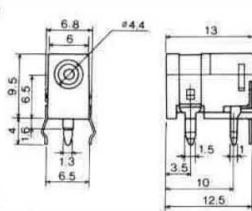
No.M04-595A0
DC JACK FOR P.C.B. (center pin : 0.65 φ mm)
JSAJ 1 (DC 3.15V Max)



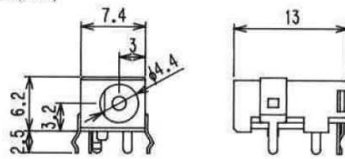
No.M05-532A0
DC JACK FOR P.C.B.
(center hole : 1.45 φ mm)
JSBJ 5 (DC 13.5V~18V)



No.M04-339A0
DC JACK FOR P.C.B. (center pin : 1.65 φ mm I.D. : 4.4 φ mm)
JSAJ 2 (DC 3.15V~6.3V)



No.M04-730A0
DC JACK FOR P.C.B. (center pin : 1.65 φ mm I.D. : 4.4 φ mm)
JSAJ 2 (DC 3.15V~6.3V)

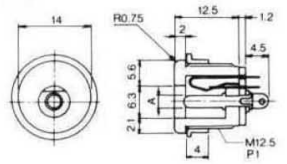


CHASSIS Mtg. DC JACK

No.MJ-10
(center pin : 2 φ mm) Net Weight: 3 gr



No.MJ-11
(center pin : 2.35 φ mm) Net Weight: 3 gr

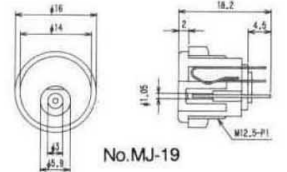


No.MJ-12
(center pin : 1.65 φ mm I.D. : 4.4 φ mm)
JSAJ 2 (DC 3.15V~6.3V)

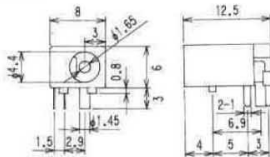
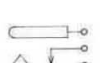
No.MJ-13
(center pin : 1.65 φ mm I.D. : 5.15 φ mm)
JSAJ 3 (DC 6.3V~10.5V)

No.MJ-19
(center hole : 1.05 φ mm)
JSBJ 4 (DC 10.5V~13.5V)

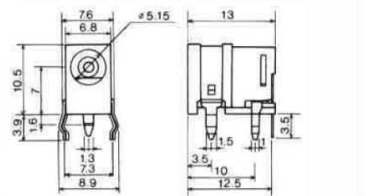
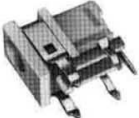
No.MJ-20
(center hole : 1.45 φ mm)
JSBJ 5 (DC 13.5V~18V)



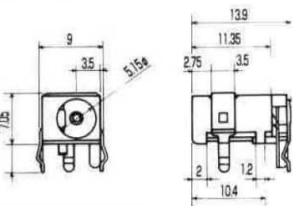
No.M04-260DJ
DC JACK FOR P.C.B. (center pin : 1.65 φ mm I.D. : 4.4 φ mm)
JSAJ 2 (DC 3.15V~6.3V)



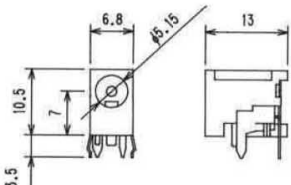
No.M04-440A0
DC JACK FOR P.C.B.
(center pin : 1.65 φ mm I.D. 5.15 φ mm)
JSAJ 3 (DC 6.3V~10.5V)



No.M04-533B0
DC JACK FOR P.C.B.
(center pin : 1.65 φ mm I.D. 5.15 φ mm)
JSAJ 3 (DC 6.3V~10.5V)



No.M04-754A0
DC JACK FOR P.C.B.
(center pin : 1.65 φ mm I.D. : 5.15 φ mm)
JSAJ 3 (DC 6.3V~10.5V)



No.MJ-14
(5.5 φ × 2.1 φ mm)

No.MJ-15
(5.5 φ × 2.5 φ mm)

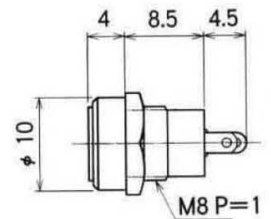
No.MJ-16
(center pin : 0.65 φ mm)
JSAJ 1 (DC 3.15V Max)

No.MJ-17
(center pin : 1.65 φ mm
I.D. : 4.4 φ mm)
JSAJ 2 (DC 3.15V~6.3V)

No.MJ-18
(center pin : 1.65 φ mm
I.D. : 5.15 φ mm)
JSAJ 3 (DC 6.3V~10.5V)

No.MJ-99
(center pin : 1.3 φ mm
I.D. : 3.4 φ mm)

No.MJ-99/3.8
(center pin : 1.3 φ mm
I.D. : 3.8 φ mm)



No.MJ-21AM
PANEL MOUNT DC JACK (Center Pin : 2 φ mm)

No.MJ-22AM
PANEL MOUNT DC JACK (Center Pin : 2.35 φ mm)

