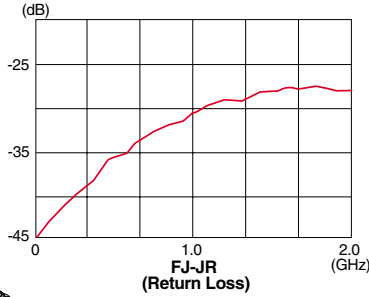
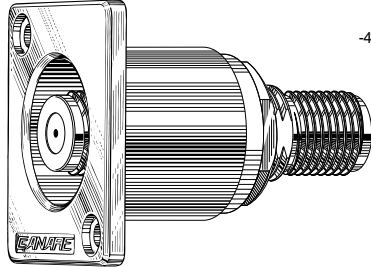


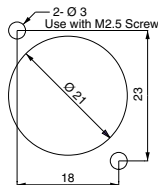
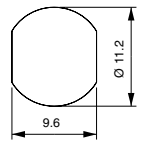
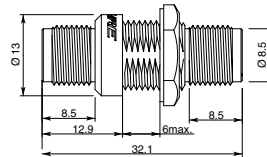
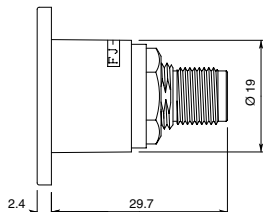
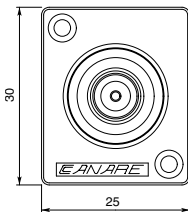
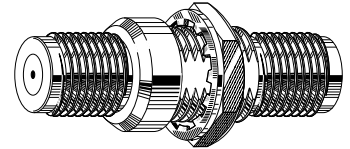
FJ-JRU

75Ω F RECESSED Bulkhead Port
 Jack (Female) to Jack (Female)
 Mounts in Common Canare Hole Punch
 Totally Isolated from Panel
 ≥26dB (≤1.1 VSWR) DC-2GHz



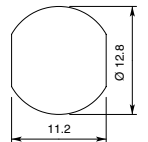
FJ-JR

75Ω F Bulkhead Port
 Jack (Female) to Jack (Female)
 Double D Hole Punch
 IU-7/16 Iso Bushing
 ≥26dB (≤1.1 VSWR) DC-2GHz

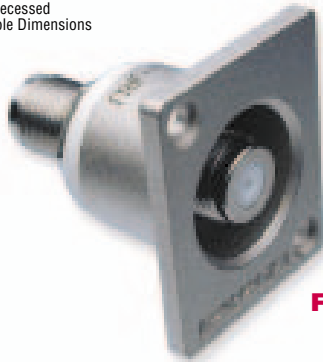


Canare Recessed Panel Mount Hole Dimensions

75Ω F JACK NOMINAL SPECIFICATIONS								
Bandwidth VSWR Return Loss DC to 2GHz	Center Contact Material Plating	Body Material Plating	Dielectric	Flange Material Plating	Insulation resistance at 500V DC	Voltage rating for 1 minute	Center contact resistance	Outer contact resistance
≤1.1 >26dB	Beryllium Copper Gold	Brass Nickel	PTFE	DieCast AL Nickel	>500MΩ	500V AC(rms)	<5mΩ	<5mΩ



Double D Panel Mount Hole Dimensions (with IU-7/16 Iso Bushing)



FJ-JRU

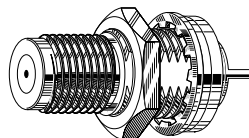


FJ-JR

75Ω F PC MOUNT RECEPTACLE

APPLICATIONS

- OEM
- BROADBAND EQUIPMENT
- CABLE MODEMS
- RF BOXES
- SATELLITE SYSTEMS

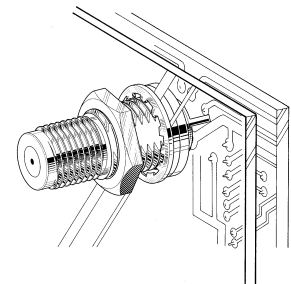


FJ-FPC

Canare introduces a new high precision 75Ω F Receptacle for PC Board solder trace hole mounting. This new connector is impedance matched and perfectly suited for use in all advanced generations of Digital Video Broadcast Equipment as well as other applications where high bandwidth and low Return Loss is required.

FEATURES

- ≥26 dB Return Loss (≤1.1 VSWR); DC to 2GHz
- Securely mounts to PCB with Chassis Support
- Gold Plated Beryllium Copper center contact



For complete model listings & detailed product specifications, request Canare's "OEM Parts Catalog"