

## BCP-TA FEATURES

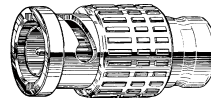
DC to 2 GHz;  $\geq 26$  dB Return Loss ( $\leq 1.1$  VSWR)

75Ω Metal Film Resistor ( $\pm 1\%$ , 1/4 Watt @ $100\text{ppm}$ )

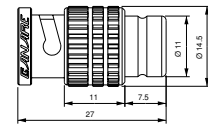
Gold Plated Center Pin; Beryllium Copper Outer Contact

Specially Designed for all Digital Video Equipment

Elongated Body Design



**BCP-TA**

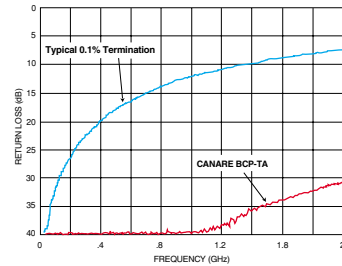


All 75Ω signals, once entered into a termination, must be fully converted into energy. If the impedance matching is not perfect, part of this energy will be reflected and poor Return Loss (VSWR) will result, especially at higher operating frequencies (i.e. computer graphics, digital video, etc.).

Common BNC terminators use a 50Ω type body with a generic 75Ω DC resistor tacked onto the back of the center contact pin.

Canare's precision 75Ω BCP-TA, far exceeds (by 20 to 30 dB) other commercial terminations, even those rated at .1% tolerance.

Careful attention to impedance design detail makes this the first true 75Ω termination with the same VSWR performance found in test lab precision terminators which cost hundreds of dollars.



Return Loss Comparison Chart

## 75Ω BNC PLUG FEMALE CONNECTOR

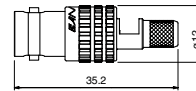
### 75Ω BNC FEMALE PLUG

Model	Matching Cable	Boot	Die
BCJ-C4	RG-59 B/U, LV-61S	CB25	TCD-4CA, TCD-451CA

- 1.1 or less VSWR up to 1.5 GHz, or less up to GHz
- Beryllium copper (gold plated) is used on the center contact for its superior spring characteristics. (Center contact is soldered)



**BCJ-C4**



**BCJ-C4**

## ISOLATION BUSHINGS

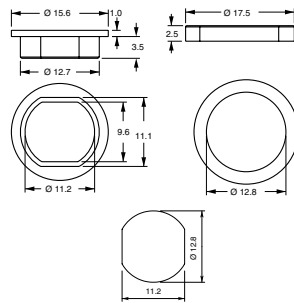
### IU-7/16

2 Piece Expandable Isolation Bushing

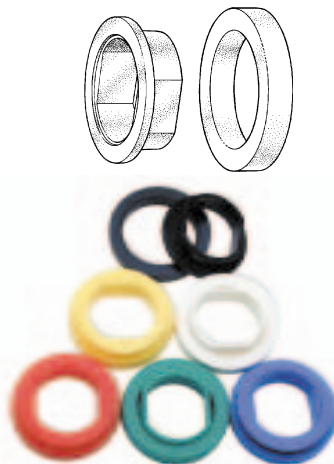
Colors: Blk, Blu, Grn, Red, Wht, Yel

High compression, ABS plastic

Accommodates 1.2mm ~ 3mm thick panels



IU-7/16 Panel Mount Hole Dimensions



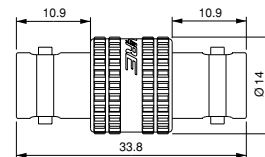
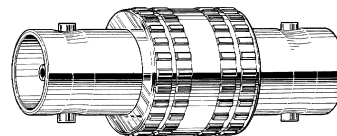
## 75Ω BNC BARREL

### BCJ-J

75Ω BNC in-line cable extension adapter

Jack to Jack

DC to 2 GHz;  $\geq 26$  dB Return Loss ( $\leq 1.1$  VSWR)



## 75Ω BNC PC MOUNT RECEPTACLES

### APPLICATIONS

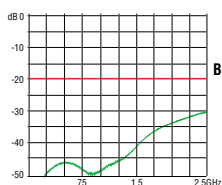
- OEM'S
- HDTV EQUIPMENT
- TELCO BROADBAND
- NTSC ANALOG VIDEO
- SATELLITE HEADEND

### FEATURES

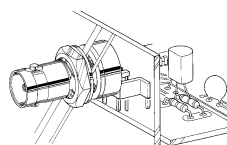
$\geq 26$  dB Return Loss; DC to 1GHz ( $\leq$ VSWR 1.1)

Securely mounts to PCB with Chassis Support

Gold Plated Beryllium Copper center contact



BCP-BPLH Return Loss



For complete model listings & detailed product specifications, request Canare's "OEM Parts Catalog"

## BNC DUST CAP

### BCJ-DC

Protects all unused BNC Bulkhead Receptacles from dirt and dust

