

**BCJ-JRU**

75Ω BNC RECESSED Bulkhead  
 Jack to Jack  
 Mounts in Common Canare Hole Punch  
 Totally Isolated from Panel  
 ≤1.1 VSWR DC-2GHz

**BCJ-RU**

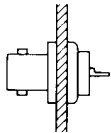
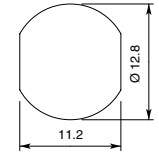
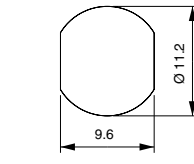
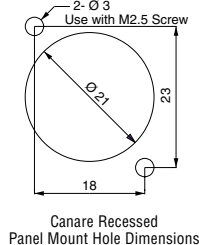
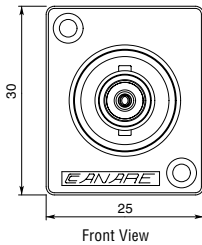
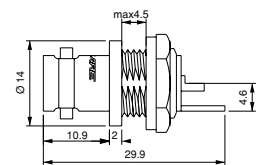
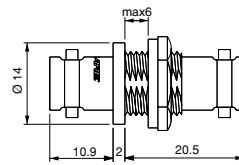
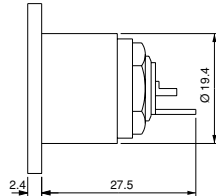
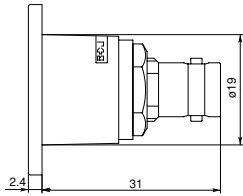
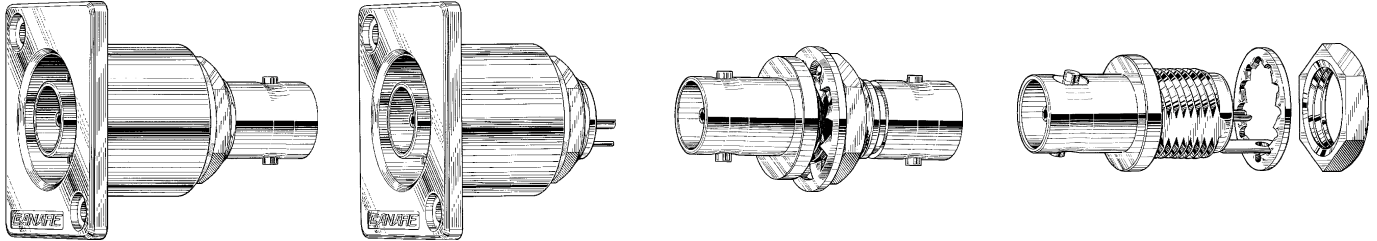
75Ω BNC RECESSED Bulkhead  
 Jack to Solder Pin  
 Mounts in Common Canare Hole Punch  
 Totally Isolated from Panel  
 ≤1.1 VSWR DC-2GHz

**BCJ-JR**

75Ω BNC Bulkhead  
 Jack to Jack  
 Use with Isolation Bushing IU-7/16  
 Double D Hole Punch  
 ≤1.1 VSWR DC-2GHz

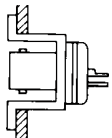
**BCJ-R/1**

75Ω BNC Bulkhead  
 Jack to Solder Pin  
 Use with Isolation Bushing IU-7/16  
 Double D Hole Punch  
 ≤1.1 VSWR DC-2GHz

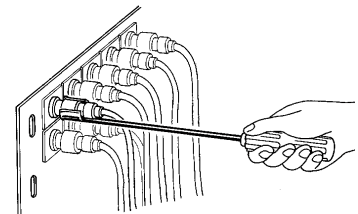


Because ordinary panel mount BNC bulkhead connectors are often precariously exposed on a wall plate located in high traffic areas, they offer little protection from physical damage.

To solve this problem, Canare developed a unique recessed **flush mount** panel jack design that effectively protects the housed connector.



Our BCJ-JRU and BCJ-RU BNC jacks have a **built in panel isolation bushing**, so they may safely reside on the panel alongside any audio, power, data or intercom lines without electrical crosstalk or grounding problems. Also available in recessed 75Ω F and RCA jack versions.



Canare now offers a high quality removal tool (**BET-12**) that can be used to insert & extract all Canare BNC crimp plugs from our recessed or standoff BNC receptacles and DVJ digital video jacks.

*Note: any generic 50Ω BNC plug will mechanically mate with Canare 75Ω BNC fittings.*



**BCJ-JRU**



**BCJ-RU**



**BCJ-JR**



**BCJ-R/1**

| 75Ω BNC JACK NOMINAL SPECIFICATIONS   |                                 |                       |            |                         |                                  |                             |                           |                          |
|---------------------------------------|---------------------------------|-----------------------|------------|-------------------------|----------------------------------|-----------------------------|---------------------------|--------------------------|
| Bandwidth VSWR Return Loss DC to 2GHz | Center Contact Material Plating | Body Material Plating | Dielectric | Flange Material Plating | Insulation resistance at 500V DC | Voltage rating for 1 minute | Center contact resistance | Outer contact resistance |
| ≤1.1 >26dB                            | Beryllium Copper Gold           | Brass Nickel          | PTFE       | DieCast AL Nickel       | > 1000MΩ                         | 1500V AC(rms)               | < 6mΩ                     | < 3mΩ                    |