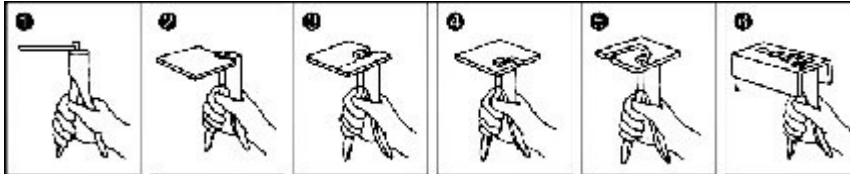


Nibbling Tool



HT-204

CUTS SHEET PLATE LIKE CHASSIS PUNCHCUTS UP TO 18 AWG SOFT METAL, 1/16" SOFTPLATE FOR INSIDE SHAPE DRILLED A 3/8" OR 9.5 ϕ HOLE FOR STARTING CUTS.

1. Material to be nibbled is placed in the gap between the punch and blade channel.
2. By squeezing the handles together, the punch will move down into the channel, cutting out a slug of metal.
3. A scribe line can be followed by looking down on work in this position. A slot is cut by making successive cuts.
4. To make a sharp 90 degrees turn, pull the tool out of the slot. Turn the work 90 degrees and insert the tool again.
5. By turning the tool before each cut, a 5/16" (7.9mm) minimum radius can be cut.
6. Almost any size or shape hole can be cut by starting with a 3/8" (9.5mm) hole.